

# Ngā Anahera Pākira

BALD ANGELS CHARITABLE TRUST



All our taitamariki  
deserve to thrive



Our original kiwiMANA whānau 2017

*All the information contained in this document is the property of Bald Angels Charitable Trust, and as such may not be copied, shared or reproduced in part or full without the express written permission of the Trustees.*

## CONTENTS:

	PAGE	
PART 1	3	VALUES- MISSION
PART 2	4-5	CEO’S STATEMENT 2022-23 & NGĀ ANAHERA
PART 3	6	WHAT WE DID
PART 4	7-15	HE TANGATA, HE TANGATA, HE TANGATA
PART 5	16-19	THE MAHI: PROJECTS AND PROGRAMMES DATA TABLES OUTCOMES-IMPACT
PART 6	20-22	RAINBOW RANGATAHI & kiwiMANA KAIĀRAHI
PART 7	23	RELATIONAL & REFLECTIVE PRACTICE
PART 8	24-25	KŌRERŌ
PART 9	26	PŪTEA



**MISSION:**

“Creating positive change for our taitamariki by leading and facilitating community collaboration.”

**OUR VALUES:**

We will value and respect all people, guided by Te Whare Tapa principles of wellness. The Physical, Mental, Spiritual and Social health of our taitamariki will be our primary focus.  
We will lead by example.

**OUR PRINCIPLES:**

Tika, Pono, Aroha, Mana, Tapu  
We do the right thing, with integrity, love, pride and respect.



Take care of our children. Take care of what they hear, take care of what they see, take care of what they feel. For how the children grow, so will be the shape of Aotearoa. **Dame Whina Cooper**

*[NOTE: Sometimes we refer to young people as taitamariki instead of rangatahi to fit the local dialect. We often use taitamariki to refer to children AND young people.]*

## Part 2: CEO'S STATEMENT Year end June 2022

*He aha te mea nui o te ao? He tangata! He tangata! He tangata!*

*What is the most important thing in the world?  
It is people! It is people! It is people!*

Our relationships are everything. The trust that our community has in us, and the relationships seeded and nurtured are humbling reminders of how our mahi is driven by the people.

Being able to deliver 6000+ connections to tamariki, whilst navigating the covid storm and kicking off 2023 with Cyclone Gabrielle, we realised that our strengths in relationships plus our ability to pivot quickly in response to crisis are critical and valuable community assets.

Whanaketanga- new and strengthened community connections with our partners and community- is a key indicator of a successful year for Ngā Anahera (the Angels), as we value our people connections above all else. Now 11 years since Angels first went bald and this charity was born, it has been all about building relationships and nurturing our most vulnerable people.

Engaging deeply with our tamariki and rangatahi in our kiwiMANA Kaiārahi and Rainbow Rangatahi programmes gives us great insight into the challenges our more vulnerable young people face. The questions always include, "How do we use any privileges we have to bring more justice and equity to the space?" "How do we empower and elevate others so they have the confidence to engage, and how do we create safe spaces for that?"

Reflecting on my own practices in community led development, facilitation and kaitiakitanga (guardianship) has deepened my respect and acknowledgment of the intersectionality of kāwanatanga (colonial/crown) and rangatiratanga (self-governance) spaces. It's been challenging but important. I've personally found it to be both reflective and active work that can be applied to any 'imbalance of power' situations, such as adult to youth, ableism, gender or race inequity.

Continually referencing our Te Tiriti principles and Trust values of tika, pono, aroha, mana and tapu is important at every stage of our journey. Purposefully naming and embedding these values- doing the right thing, with honesty and integrity, respect and love, into our youth work has improved behaviours, managed expectations, and empowered whai wāhitanga - giving youth agency and supporting them to choose how they engage.

Connecting in really circular partnerships with our Partners in health, education and social services, iwi organisations, and Police has really enriched shared outcomes this last year. We provide parcels of warmth, kai, furniture, and mentoring that Partners may not be resourced to deliver, *and* we also refer tamariki and whānau *to* them for professional services we cannot provide. Weaving the strengths and resources of each together creates the kete of support - or completes that circle.

Then we have our incredible volunteers, who *give* so much time and energy, *and* they *receive* so much joy, and many intrinsic benefits in return. That circle is rich and complete.

Community business sponsorships anchor us, and without those awesome businesses, the increasing support through regular giving, and our generous funders, we could not deliver the mahi. The circular

impact there is that as we support vulnerable youth to make wise choices through our kiwiMANA programmes, the long term burdens on community lessen.

And of course, our Trustees and advisors, kaitiaki we rely on for governance and guidance, are our Guardian Angels. Without them and our staff, who give much aroha, commitment and energy, we'd be rudderless. I thank you all.

The interweaving of all the people creates the kete of Angel goodness. Thank you for being part of our Angel family.

Together, we are stronger.

Mauri ora

*Thérèse*

**OUR ANGEL BOARD AND CORE TEAM**

**Arana Munro**- Kaumatua -Ngāti Rehia  
**Hana Munro** – Kuia - Ngāti Rehia

**BOARD**

**Thérèse Wickbom** – Co-founder, CVO (Vision, Operations, Development)  
**Dr Sharon Toi** – Strategy, Policy, Education, Community-*Tangata Whenua*  
**Irenee Cooper**– Strategy, Community, Business- *Tangata Whenua*  
**Tiffiney Gee**– Strategy, Marketing, Events- *Tangata Whenua*  
**Annika Dickey**– Treasurer (Chartered Accountant-Whitelaw Weber)

**ADMIN**

**Snjezana Charlton**- Administration (Projects, Volunteers, Operations)  
**Sue Devaliant & Carrera Vickers**- Administration (Projects, Logistics, Kaiārahi)



Left to right: Dr Sharon Toi (Trustee- Fulbright Scholar, researcher and Kaupapa Māori expert), Irenee Cooper (Trustee-business executive, granddaughter of Dame Whina Cooper), Thérèse Wickbom (Founder-with 2022-2023 Kiwibank NZer of the Year Top 100 Award), Hana Munro (beautiful kuia), Tiffiney Gee (Trustee -brand & communications expert)



## Part 3: WHAT WE DID



Bay of Islands pēpē in picks flowers while māmā learns life skills with mentors



Kaikohekohe tamariki have enjoyed tickets to various shows, kai, warm clothes and shoes.



Rainbow Rangatahi have fun and share with us, in a safe weekly Club meet

TABLE 1

PROJECT/PROGRAMME	What?	Est No. of taitamariki impacted in 2022-23
<b>Christmas Kai</b> - 6 parcels per/whanau x 400 whānau <b>Christmas Gifts</b> - several items make 1 x gift (over 2476 items were donated)	1200 boxes groceries & Xmas Gifts	1212
<b>Hospice Angel treats</b> (also known as Memory Making Moments)	4 whānau trips/treats	3 whānau/14 tamariki
<b>KiwiMANA Kaiārahi- Rainbow Rangatahi-</b> Mentoring youth actively engaged in RR Club & creating safe communities	Weekly engagement via RR club/comms	15
<b>KiwiMANA Kaiārahi</b> youth support/mentoring	Mentor/awhi	7+
<b>General Emergency Support</b> -via partner referrals	Household goods, car seats etc	1828
<b>Keep Our Kids Warm</b> – collecting from the community and distributing via partners	Warm clothing and bedding	6009
<b>Coats4 Kids-Auckland to Northland</b> The youth in Auckland Schools who engaged in the volunteering and donating have not been counted-but this has positive impact on them also.	Warm jackets	1434 Recipients Plus the youth who volunteered and donated
<b>Angel Sacks</b> knitted baby cocoons- supplied to the three hospitals in the Far North	Woollen Sleeping bags	167
<b>Active Angels</b> - keeping our kids active	sports shoes est 300pr + Sports balls x 200	454
<b>Angel Bears</b> - trauma teddies distributed via Police, Ambulance, Social Workers	Trauma Teddies	130
<b>Cyclone Response</b> - Feb/Mar 2023. 3037 items =343 bedding, 2312 youth clothing + 382 baby food (est 3 or 4 items p/child)		750-800
<b>OTHER: Tickets for Shows (Glow Show, Matariki x 100)</b>	Incl whānau so est children=	70
<b>EST. TOTAL POSITIVE CONNECTIONS TO VULNERABLE TAMARIKI &amp; RANGATAHI</b> <b>**Actual children impacted estimate</b>		12,099 6,000

NOTE: The numbers shown are based on the number of parcels/services delivered to taitamariki.

\*\*It is highly likely that some children have received multiple support parcels over the year – kai/clothes and bedding/xmas toys. We shall assume that ½ of the numbers above represent an indicative figure of actual children impacted.

SEE below: Part 5 THE MAHI (Pg 16) Tables for breakdown of projects, outputs and Impact

TABLE 2

<b>VOLUNTEER HOURS</b>	<b>Year End June 30 2022 Total Volunteer Hours</b>
Keep Our Kids Warm (KOKW)& Coats 4 Kids	<b>184</b>
Xmas Toys	<b>250</b>
Xmas Kai	<b>794</b>
Hospice Memory Making Moments	<b>5</b>
General Emergency supplies	<b>50</b>
Angel Bears	<b>52</b>
KiwiMANA Kaiārahi	<b>850</b>
Management, Admin, Accounting, Legal	<b>1880</b>
Baby Knitwear/Angel Sacks (Busy Bees and Orchard Hive)	<b>18000</b>
Events: Movie Fundraiser	<b>47</b>
Events: Gold Day, Xmas Parade, (Angel Wings) feathers in Domain	<b>130</b>
Angel Wings Project	<b>50</b>
Cyclone Gabrielle	<b>129</b>
<i>Value est over \$500,000.00</i>	
<b>TOTALS</b>	<b>22421 hours</b>

Our VOLUNTEERS are the lifeblood of our organisation. This year we were delighted to see them awarded multiple Awards from VOLUNTEER NORTHLAND. They deliver an extraordinary number of hours, and so much aroha, care and support for us all.

Rangatahi volunteering & sharing energy with our regular volunteers



Volunteers connecting for good



Mentoring amazing rangatahi

Volunteering time and aroha



Our beautiful Kaumatua and kuia



**TABLE 3: Whanaketanga & Whanaungatanga  
Collaboration- KEY Partnerships**

**NOTE: GREY SHADES = ACTIVE YOUTH SERVICE PARTNERSHIPS**

Our Partnerships with other organisations are key to developing strong programmes. It is our relationships with these people that allow us to deliver such great outcomes. Referencing the examples shown in this table, the spirit of whanaungatanga (connectedness) and manaakitanga (taking care of each other), have shown that a community that shares resources *can really* change lives and support the wellbeing of our taitamariki.

<b>PARTNER Organisation</b>	<b>Mahi (work) - Project/programmes</b>	<b>Our Relationship Objectives</b>	<b>IMPACT as at 2022</b>
<b>NZ Police</b>	<b>KEEP OUR KIDS WARM &amp; Coats 4 Kids</b> <b>Christmas Kai Boxes</b> <b>Christmas Toy Drive</b> <b>Angel Bears</b> <b>Emergency Angel Support</b> <b>Covid Response</b>  <b>AWHI partner</b>	Collaborative Community support.  To support whānau in crisis and to provide resources to Police so they may add impact to their relationships with the community and protect our people  Police have referred youth to kiwiMANA	Police are resourced beyond their normal scope Police feel greater satisfaction being able to deliver beyond their scope Prevention and connection Improved relationships leading to reduced crime. Whānau are supported with emergency supplies, thus reducing stress, ill health, and crime. Children are comforted with Angel Bears Police are better able to work without distraction once children have Bears
<b>Kerikeri High School</b>	<b>Rainbow Rangatahi kiwiMANA Kaiārahi</b>  <b>Christmas Kai Boxes</b> <b>Christmas Toy Drive</b> <b>Emergency Angel Support</b>	Collaborative Community support.  To support rangatahi and whānau with challenging rangatahi, vulnerable rangatahi and Rainbow rangatahi.  Share impact & understandings to our relationships with rangatahi and work together to protect and guide them	Rangatahi are: Engaged and Connected Supported & Empowered to share their lived realities, strengthen relationships, experience new opportunities, grow confidence.  Gain credits and experience enabling them to further their education and improve employment skills. Motivated to attend school more often.  Whanau are supported with emergency supplies, thus reducing stress, ill health, and crime. Youth are supported health and employment as needed.
<b>Springbank School</b>	<b>Rainbow Rangatahi kiwiMANA Kaiārahi</b>  <b>Christmas Kai Boxes</b> <b>Christmas Toy Drive</b>  <b>Fundraising partners</b>	Collaborative Community support. The school empowers and encourages youth to create fundraising projects which support Bald Angels  To support Rainbow Rangatahi(the school does not actively promote this as a private Christian school, but we have their students at RR)	Rangatahi are: Engaged in entrepreneurial ventures. Exposed to the realities of a different 'normal' experienced by youth less privileged.  Engaged and Connected with Rainbow Club  Supported & Empowered to strengthen relationships, experience new opportunities, grow confidence and empathy



<b>ANZ BANK</b>	<b>kiwiMANA Kaiārahi</b> Financial literacy, advocacy, budgeting and debt management	Engagement in consultation and community needs assessments.  Collaborative community support	The GM of the bank mentors our rangatahi and whānau when there is a willingness to engage in honest kōrerō around financial issues.
<b>Hauora Hokianga</b>	As distributors for our <b>Keep Our Kids Warm</b> project , <b>Angel Sacks, Active Angels, Christmas Kai Boxes</b> and <b>Christmas Toy drive</b> , we know that the goods are getting to those who need them in the Hokianga area.	Connection to the Hokianga rohe  Engagement in consultation and community needs assessments.  Collaborative community support.	Kaimahi are enabled to deliver greater support to their clients  Tamariki are resourced with school supplies, books, sports equipment  Whanau are supported with emergency supplies, thus reducing stress, ill health, and crime.  Whanau are empowered to take control of choices leading to improved wellbeing
<b>Kerikeri Touch Rugby</b>	Sports opportunities	Collaborative community support Empower whānau to be active together with tamariki Foster community wellbeing	Youth are resourced with sports opportunities  Balls, kit and tees are supplied for the team
<b>Ngāti Hine Health Trust</b>	As distributors for our <b>Keep Our Kids Warm</b> project , <b>Christmas Kai Boxes</b> and <b>Christmas Toy drive</b> , we know that the goods are getting to those who need them in the Kawakawa, Moerewa, Bay of Islands area.	Connection to the Kawakawa, Moerewa, Bay of Islands district  Engagement in consultation and community needs assessments.  Collaborative community support  Youth Mental Health and Addictions support  Support tenancy matters /emergency housing support	We navigate whānau to their social services. They have shared feedback and understandings around community needs and challenges.  Whanau are supported with emergency supplies, thus reducing stress, ill health, and crime.  Kaimahi are enabled to deliver greater support to their clients  We have engaged with several whānau directly to support and encourage sustainable wellbeing solutions. This has led to greater understandings around the challenges of long term engagement and empowerment/lack of.
<b>Hiwa I Te Rangi</b>	<b>KiwiMANA Kaiārahi</b> supports this Young Parents Education facility (part of Northland College-Kaikohe)  <b>Keep Our Kids Warm Christmas Kai Boxes Christmas Toy Drive Angel Bears</b>	Provided mentoring and support to rangatahi. Gained insights into the challenges faced by young parents. Supported young parents with mentoring, business support for YES (Young Enterprise Scheme) &	Rangatahi are: Empowered Engaged and connected Enthusied and excited about the opportunities Supported Gain credits and experience enabling them to further their education and improve employment skills.

	<b>Emergency Support kiwiMANA Kaiārahi</b>	emergency supplies Co-created solutions and resources to improve educational and life outcomes	Whanau are supported with emergency supplies, thus reducing stress, ill health, and crime. Youth are navigated to employment opportunities
<b>Rainbow Youth NZ</b>	<b>KiwiMANA Kaiārahi Rainbow Rangatahi</b>	Collaborative Community support.  To support rangatahi with safe spaces and social networks  Advocacy	Inclusion  Safe Spaces  Social networks  Mental, emotional and physical support
<b>Te Runanga o Ngāti Rehia</b>	As distributors for our <b>Keep Our Kids Warm</b> project , <b>Christmas Kai Boxes</b> and <b>Christmas Toy drive</b> , we know that the goods are getting to those who need them in the Kerikeri, Bay of Islands area. Designed our <b>Rainbow Rangatahi</b> logo	Local Kerikeri area hāpu  Engagement in consultation and community needs assessments.  Consultation and Collaborative community support  We sponsored Ti Tii School International Academy Kapa Haka costumes	Our kaumatua and kuia advise and guide us  Whānau are navigated to social services in their area.  Whānau are supported with emergency supplies, thus reducing stress, ill health, and crime.  We are supported with tikanga and local te Ao Māori and invited to partake in local celebrations
<b>Lazy Sneakers</b>	<b>Active Angels</b>	Collaborative Community support.  National recognition and inclusiveness	Rangatahi <ul style="list-style-type: none"> <li>• have been supplied with good sports shoes</li> <li>• have greater ability to be active</li> <li>• can join team sports</li> <li>• can engage in healthy activities</li> <li>• can feel more confident</li> </ul>
<b>Mid North Family Support</b>	<b>kiwiMANA Kaiārahi+ Rainbow Rangatahi</b>	Collaborative Community support.  Professional counselling services	People are supported with professional counselling.  Collaborative support delivers stronger outcomes
<b>Jacman Entertainment</b>	<b>kiwiMANA Kaiārahi+ Rainbow Rangatahi</b>	Engage taitamariki in creative experiences	Access to cultural & creative community entertainment
<b>R Tucker Thompson Trust</b>	<b>kiwiMANA Kaiārahi+ Rainbow Rangatahi</b>	Engage Taitamariki in healthy experiences to build skills, confidence and knowledge	Access to sailing adventures at special rates
<b>NZ Youth Mentoring Network</b>	<b>kiwiMANA Kaiārahi+ Rainbow Rangatahi</b>	Train mentors and share experiences, strengths and knowledge	Access to training programmes, resources and support for our team
<b>Te Hau ora o Ngāpuhi</b>	As distributors for our <b>Keep Our Kids Warm</b> project ,	Connection to the Kaikohekohe rohe	We navigate whānau to their social services

<p><b>(THOON)</b></p>	<p><b>Christmas Kai Boxes and Christmas Toy drive</b>, we know that the goods are getting to those who need them in the Kaikohekohe area.</p> <p>Original kiwiMANA partners</p>	<p>Engagement in consultation and community needs assessments.</p> <p>Collaborative community support.</p> <p>THOON have been providers for various services that support the whanau we navigate to them, eg: Stop Smoking, Money Mates financial literacy, and general Social Services. <i>NOTE: currently not accessing these services, as focused more on Kerikeri youth support</i></p>	<p>Kaimahi are enabled to deliver greater support to their clients Whanau are supported with emergency supplies, thus reducing stress, ill health, and crime.</p> <p>Whanau are empowered to take control of choices leading to improved wellbeing</p>
<p><b>Healthy Families Far North</b></p>	<p>Our CEO sat in their Strategic Leadership Group 2021.</p> <p>Provided community support – lived experience via Rainbow rangatahi to inform research on health models for previous govt.</p>	<p>Understanding of this organisation and it's objectives</p> <p>Connections and resources that could support our people to live healthier lives</p>	<p>Networking - sharing insights and evaluations We have a greater understanding of the HF and MOH objectives</p> <p>We have shared resources and learnings in the community garden/Kai resiliency projects/rangatahi needs/whānau needs</p>
<p><b>BUSY BEES Crafters and Knitters</b></p>	<p>Crafting of our <b>ANGEL SACKS</b></p> <p>Warm clothes and blankets for <b>KEEP OUR KIDS WARM &amp; Coats 4 Kids</b></p> <p><b>Christmas Toy Drive</b>- special toys are made</p>	<p>To access warm knitwear, Angels Sacks and blankets so we can support vulnerable babies/whanau in Te Tai Tokerau.</p>	<p>Children are kept warm. Caregivers are relieved of some stress. Hospital staff &amp; social workers enjoy giving new mums warm Angel Sacks and clothes to take home.</p> <p>Over 30 retirees come together to socialise, stay active, awahi each other, feel valued and have purpose Year to June 30 2023</p> <ul style="list-style-type: none"> <li>• More than 2000 items have been supplied in 12 mths</li> <li>• <b>over 18000 volunteer hours per annum</b></li> </ul>
<p><b>ADDITIONAL OUTCOME:</b> These groups of retired elders have a purpose, feel valued, use their skills, exercise their brains and hands as well as meet in companionship. They have commented that their mental, physical and social health is improved.</p> <p>The elderly relatives have been also using the blankets and even using Angel Sacks as foot warmers once moko have grown out of them! Although Bald Angels exists to support taitamariki-the added impact on whanau is considerable.</p>			
<p><b>Te Runanga o Whaingaroa</b></p>	<p>As distributors for our <b>Keep Our Kids Warm &amp; Coats 4 Kids</b> projects, <b>Christmas Kai Boxes and Christmas Toy drive</b>, we know that the goods are getting to those who need them in the Whaingaroa area.</p>	<p>Connection to the Kaeo/Whangaroa district</p> <p>Engagement in consultation and community needs assessments.</p> <p>Collaborative community support</p>	<p>Whanau are navigated to social services in their area.</p> <p>We have facilitated Introductions to Hiwa I Te Rangi to support solutions for rangatahi/education for young parents.</p> <p>Whanau are supported with emergency supplies, thus reducing stress, ill health, and crime.</p>

<b>Te Nohoanga</b>	<b>KEEP OUR KIDS WARM &amp; Coats 4 Kids Christmas Kai Boxes Christmas Toy Drive Angel Bears Emergency Angel Support</b>	To provide significant <b>Emergency Support</b> for whanau in emergency housing, transitioning, and critical needs.	Whanau are enabled to live more comfortably when at a crisis point. Children are healthier due to clothing, bedding and food supplies. Whanau are enabled to transition to new accommodation with some furniture/furnishings.
<b>Far North Reap</b>	As distributors for our <b>Keep Our Kids Warm</b> project , <b>Christmas Kai Boxes</b> and <b>Christmas Toy drive</b> , we know that the goods are getting to those who need them in the Kaitaia area.	Connection to the Kaitaia district  Engagement in consultation and community needs assessments.  Collaborative community support	Far North Reap have advised us on child Car Seat safety which has informed our processes on collecting and distributing these. They have shared feedback and understandings around community needs and challenges. We have facilitated Introductions to Hiwa I Te Rangi to support solutions for rangatahi/education for young parents. Whanau are supported with emergency supplies, thus reducing stress, ill health, and crime.
<b>Te Hiku Hauora</b>	As distributors for <b>Angel Sacks, Christmas Kai Boxes</b> and <b>Christmas Toy drive</b> , we know that the goods are getting to those who need them in the Kaitaia area.	Connection to the Kaitaia rohe  Engagement in consultation and community needs assessments.  Collaborative community support.	Kaimahi are enabled to deliver greater support to their clients Whanau are supported with emergency supplies, thus reducing stress, ill health, and crime.  Whanau are empowered to take control of choices leading to improved wellbeing
<b>Ngāti Kahu Social and Health Services</b>	As distributors for our <b>Keep Our Kids Warm</b> project , <b>Christmas Kai Boxes</b> and <b>Christmas Toy drive</b> , we know that the goods are getting to those who need them in the Kaikohekohe area.	Connection to the Northern rohe  Engagement in consultation and community needs assessments.  Collaborative community support.	We navigate whānau to their social services.  Kaimahi are enabled to deliver greater support to their clients Whanau are supported with emergency supplies, thus reducing stress, ill health, and crime.  Whanau are empowered to take control of choices leading to improved wellbeing
<b>Ngāpuhi Iwi Social Services</b>	As distributors for our <b>Keep Our Kids Warm</b> project , <b>Christmas Kai Boxes</b> and <b>Christmas Toy drive</b> , we know that the goods are getting to those who need them in the Kaikohekohe area.	Connection to the Kaikohekohe rohe  Engagement in consultation and community needs assessments.  Collaborative community support	We navigate whānau to their social services.  They have shared feedback and understandings around community needs and challenges.  Whanau are supported with emergency supplies, thus reducing stress, ill health, and crime.  Kaimahi are enabled to deliver greater support to their clients



<p><b>Te Whare Ruruhau O Meri Trust</b></p>	<p>As distributors for our <b>Keep Our Kids Warm</b> project , <b>Christmas Kai Boxes</b> and <b>Christmas Toy drive</b>, we know that the goods are getting to those who need them in the Far North</p>	<p>To support whanau in times of crisis.</p> <p>To develop understanding of needs and challenges.</p> <p>Collaborative community support</p>	<p>Whanau are enabled to live more comfortably when at a crisis point. Children are healthier due to clothing, bedding and food supplies.</p> <p>Whanau are enabled to transition to new accommodation with some furniture/furnishings.</p> <p>Kaimahi are enabled to deliver greater support to their clients</p>
<p><b>The Fono Social</b></p>	<p>New 2023 partner for our <b>Keep Our Kids Warm</b> project , <b>Christmas Kai Boxes</b> and <b>Christmas Toy drive</b>, we know that the goods are getting to those who need them in the Far North</p>	<p>To support whanau in times of crisis.</p> <p>To develop understanding of needs and challenges.</p> <p>Collaborative community support</p>	<p>Whanau are enabled to live more comfortably when at a crisis point. Children are healthier due to clothing, bedding and food supplies.</p> <p>Whanau are enabled to transition to new accommodation with some furniture/furnishings.</p> <p>Kaimahi are enabled to deliver greater support to their clients</p>
<p><b>Womens' Refuges- Kaitaia and Mid North</b></p>	<p>As distributors for our <b>Keep Our Kids Warm</b> project , <b>Christmas Kai Boxes</b> and <b>Christmas Toy drive</b>, we know that the goods are getting to those who need them in the Mid and Far North</p>	<p>To support whanau in times of crisis.</p> <p>To develop understanding of needs and challenges.</p> <p>Collaborative community support</p>	<p>Whanau are enabled to live more comfortably when at a crisis point. Children are healthier due to clothing, bedding and food supplies.</p> <p>Whanau are enabled to transition to new accommodation with some furniture/furnishings.</p> <p>Kaimahi are enabled to deliver greater support to their clients</p>
<p><b>Te Runanga o te Rarawa</b></p>	<p>As distributors for our <b>Keep Our Kids Warm</b> project , <b>Christmas Kai Boxes</b> and <b>Christmas Toy drive</b>, we know that the goods are getting to those who need them in the Kaitaia area.</p>	<p>Connection to the Kaitaia district</p> <p>Engagement in consultation and community needs assessments.</p> <p>Collaborative community support</p>	<p>We navigate whānau to their social services.</p> <p>Shared feedback and understandings around community needs and challenges.</p> <p>Whanau are supported with emergency supplies, thus reducing stress, ill health, and crime.</p> <p>Kaimahi are enabled to deliver greater support to their clients</p>
<p><b>PLUNKET</b></p>	<p>As distributors for our <b>Keep Our Kids Warm</b> project , <b>Christmas Kai Boxes</b> and <b>Christmas Gifts</b>, we know that the goods are getting to those who need them in the Far North area.</p>	<p>Connection to the tamariki and young whanau in the district</p> <p>Engagement in consultation and community needs assessments.</p> <p>Collaborative community support</p>	<p>Shared feedback and understandings around community needs and challenges.</p> <p>Whanau are supported with emergency supplies, thus reducing stress, ill health, and crime.</p> <p>Kaimahi are enabled to deliver greater support to their clients</p>

<p><b>St John Ambulance</b></p>	<p><b>Angel Bears</b></p> <p><b>Emergency Support</b></p>	<p>Collaborative Community support.</p> <p>To support whanau in crisis and to provide resources to St John Ambulance so they may soften trauma in tamariki</p>	<p>Families have been supported with emergency kai and clothing at times of trauma</p> <p>Kaimahi are enabled to deliver greater support to their patients</p> <p>Children are comforted due to Angel Bears being provided during trauma.</p>
<p><b>Mid North Hospice</b> (EST 2012)</p> <p>We raised \$35000,00 and donated it all to MNH</p>	<p><b>Angel Treats Christmas Kai Boxes and Christmas Toy drive</b></p> <p>Enabling vulnerable children to enjoy quality and precious time with whanau.</p>	<p>2012 we set up a fund that supports taitamariki affected by terminal illness- whether themselves or a close whānau member.</p>	<p>Whānau enjoy time together doing something meaningful &amp; fun without financial pressure and additional stress. Memories are made that can be treasured forever.</p> <p>As a result of this early 2012/13 partnership, we gained an understanding of the challenges facing those in poverty</p>
<p><u>Additional Impact:</u> This led to the creation of other projects impacting thousands of taitamariki. The “Keep Our Kids Warm” (KOKW)Project was developed due to our Hospice connections to vulnerable whanau. Then from this project, the ‘Xmas Toy &amp; Kai Projects’ and then ‘Coats 4 Kids -Auckland to Northland’ were developed.</p>			
<p><b>BELOW: Partnerships that have led to current projects and programmes but not so actively engaged at this time.</b></p>			
<p><b>Northland Regional Corrections Facility 2014-2019</b></p> <p><i>No longer have an MOU- but this relationship led to kiwiMANA programme and informed understandings that drive current mahi</i></p>	<p><b>AngelMATES</b></p> <p><b>KiwiMANA Kaiārahi</b></p> <p><b>Community Garden- Te Roopu Huarahi Oranga</b></p>	<p>Opportunity to develop greater understanding of the road to crime, and the challenges that must be addressed to prevent our rangatahi taking that path.</p> <p>Connections and links to the community for the prisoners, opportunities to develop projects of mutual benefit.</p> <p>Significant work in our Community Gardens was undertaken by the men, and funds were raised and donated by their Art programmes.</p>	<p>We engaged with the men and gained insights into their lives. This engagement led to the development of the <b>kiwiMANA</b> programme</p> <p>We supplied references contributing to at least prisoner release and employment of that man.</p> <p>Funds raised by their Art programmes.</p> <p>Development of the Gardens and contribution to shelter, fencing and toolshed-all of which has now been gifted to Te Runanga iwi o Ngāpuhi.</p>
<p><u>Additional Impact:</u> The men who rehabilitate well can pass on learnings to their younger siblings, children and whānau. That impact is unmeasurable.</p> <p>As a result of our relationships with the young men and a single comment from a 21year old inmate, the <b>kiwiMANA</b> programme was born. He said, “I have learnt that I am worth something(in prison)”</p> <p>The learnings from this project led to the development of the <b>Kaiārahi</b> (mentoring) programme and consultations with local business to develop broader programmes to support our young people.</p>			
<p><b>Mahitahi Hauora</b></p> <p><i>No longer actively involved as at</i></p>	<p>Northland’s Primary Health Entity (<i>now changed</i>)</p> <p>Our until 2020CEO sat in the Community Advisory Group</p>	<p>Understanding of organisations engaged to deliver outcomes for Government.</p> <p>Connections and resources</p>	<p>Networking - sharing insights and evaluations</p> <p>We can advocate for the community</p> <p>We have a greater understanding of primary health care challenges in delivery</p>

2023		that could support our people to live healthier lives	We have facilitated connections to other organisations, people and voices that inform Mahitahi Hauora
Te Runanga iwi o Ngāpuhi	Collaboration in community leadership and discovery  KiwimANA Kaiārahi	Engagement in consultation and community needs assessments.  Collaborative community support	Collaborative consultations with community: <i>previously via Kai Konnect- health food solutions project and Kaumatua community consultations</i>

Community led development that invites kōrerō around diversity, inclusion, equity. We led the installation of this community designed art work-The Angel Wings



Fundraisers bring the whole community together to make a difference



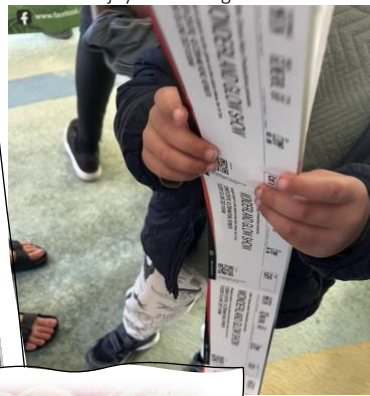
Partnering Auckland schools allows us to bring many hundreds of warm clothing and bedding items to the Far North for our taitamariki. More privileged youth get to experience empathy and compassion and share what they don't need.



Partnering social services, Police, Plunket and local iwi means we reach the people who need the support.



Creating opportunities for taitamariki to engage, connect & experience fun and culture through business partnerships. Whānau enjoy a show together.



A young māmā & her pepi in Kaitiāia are able to enjoy Christmas together with kai and gifts now.



Our beautiful Kaumatua and kuia



Olive from Te Runanga o Ngāti Rehia about to distribute warm goodies

## PART 5: The Mahi-PROJECTS AND PROGRAMMES

TABLE 4



ANGEL BEARS

130

2023

1909

(TOTAL SINCE 2013)

**ANGEL BEARS**, small fluffy teddies designed to support children in trauma. Also a means of income via Sponsor a Bear, and retail POS displays.

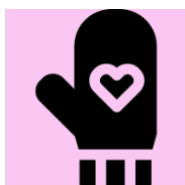
Now included in an Incentivising Stop Smoking pack for Pregnant Mums via Iwi Organisation. Reduction in numbers due to reduced volunteer support and management of the project during COVID.

**Collaboration:** Partnerships with First responders-NZ Police, St John Ambulance, NZ Fire Service and **Supplied to partners:** Social services, Hospitals, Schools

**Going Forward:** Development of online sales and marketing, and new partnerships to manage this.

YEAR	Delivered to Services i.e: FIRST RESPONDERS	Number of Children impacted
2016-17	420	420
2017-18	250	250
2018-19	608	608
2019-20	250	250
2020-21	150	150
2021-22	100	100
2022-23	130	130
<b>TOTAL</b>	<b>1909</b>	<b>1909</b>

TABLE 5



KEEP OUR KIDS WARM & COATS 4 KIDS AUCKLAND-NORTHLAND

10735

2023

37933

(TOTAL SINCE 2013)

**KEEP OUR KIDS WARM: Warm clothing and Bedding** Donated from the local community

**Coats 4 Kids- Auckland to Northland:** Auckland schools collect donations of coats and warm clothing from students and we bring it all the Northland

**Collaboration:** Partnerships with Auckland Schools and **Supplied to partners:** Social Services, Hospitals, Police, Schools

**Going Forward:** more schools in Auckland will join the network

Number of items

YEAR End June 30	WARM CLOTHING & COATS 4 KIDS	BLANKETS BEDDING	BABY KNITWEAR (PER SET: TOP, BOOTIES, BEANIE)	ANGEL SACKS	EMERGENCY clothing parcels	TOTALS
2014						
2015	400				5	405
2016	460	20			3	483
2017	600	95		2	4	701
2018	400	190	100	12	0	702
2019	1500	493	250	125	2	2370
2020	2085	667	1029	131	1	3913
2021	2226	1644	2043	132	15	6060
2022	5593	1415	1691	222	86	9007
2023	10735	1168	2018	167	204	14292
<b>TOTAL</b>	<b>23999</b>	<b>5692</b>	<b>7131</b>	<b>791</b>	<b>320</b>	<b>37933</b>



TABLE 6



ANGEL SACKS

167

2022-23

771

(TOTAL SINCE 2016)

**ANGEL SACKS:** a wool sleeping bag we designed for newborns. After consulting with Doctors, midwives and Plunket, we settled on a design that is practical, comfortable and safe. Many of our babies in Northland live a transitional life, moving from place to place, or not in healthy homes. Having their own safe and cosy sleeping bag gives them some level of comfort and warmth and contributes to their wellbeing. Included in an incentivising Stop Smoking pack for hāpu māmās via Iwi & Hauora organisations

**Baby Knitwear and blankets:** cardigans, tank tops, booties and beanies plus blankets (knitted) and quilts (sewn) are distributed across the Far North.

The BUSY BEES knitters and crafters in Kerikeri create all the baby knitting for us -clothes, blankets and Angel Sacks (over 15,300 Volunteer hours last year!)

**Collaboration: Supplied to partners:** Busy Bees volunteer team.(18000 hours last year!)

Maternity wards at BOI Hospital, Kaitaia Hospital and Rawene Hospital plus Plunket and Iwi Social Services.

**Going forward** we plan to ensure every child in Northland has an Angel Sack at birth. We need more wool resources.

YEAR	Delivered to partners	Number of Children impacted
2016-17	2	2
2017-18	12	12
2018-19	125	125
2019-20	131	131
2020-21	132	132
2021-22	222	222
2022-23	167	167
<b>TOTAL</b>	<b>771</b>	<b>771</b>

NOTE: there was an error in a previous report-over calculating on the 2018-19 year

TABLE 7



XMAS GIFTS

1212

2022-23

10122

(TOTAL SINCE 2013)

**XMAS GIFTS:** Community donations annually from late October to December

**Collaboration:** Community, Rotary Clubs, Lions Clubs, local Businesses, Partners.

**Supplied to partners:** NZ Police, Plunket , Iwi Social Services, Women’s Refuge, Foodbanks, Health providers, Education providers,

**Going forward** Continue to fundraise and build capacity; continue to consult with partners to improve outcomes

YEAR	Number of Children impacted (It is likely that some of the same children have benefited over multiple years)
2012-13	200
2013-14	300
2014-15	350
2015-16	450
2016-17	650
2017-18	1200
2018-19	1600
2019-20	1500
2020-21	1460
2021-22	1260
2022-23	1212
<b>TOTAL</b>	<b>10122</b>

TABLE 8



XMAS KAI BOXES

404

whānau 2022-23

1807

(TOTAL SINCE 2013)

**XMAS KAI BOXES** We purchase food and accept donations and discounts-this allows us to provide economical and nutritionally sound staples of kai,(fresh fruit, veggies, meat, and dry goods) cleaning products, hygiene, and treats.

**Collaboration:** Rotary Clubs, Lions Clubs, Local Businesses, NZ Police.

**Supplied to partners:** NZ Police, Plunket , Iwi Social Services, Women’s Refuge, Foodbanks, Health providers, Education providers

**Going forward** Continue as is whilst consulting with partners to improve the delivery whenever possible

YEAR	Number of whanau	No of Boxes packed per xmas food parcel	Number of Children impacted (based on 3 children p/parcel to 2020 which is a low estimate)
2015-16	40	80	120
2016-17	50	150	150
2017-18	150	450	450
2018-19	180	720	540
2019-20	183	732	549
2020-21	400	2400	1200
2021-22	400	2400	1260
2022-23	404	2424	1212
<b>TOTAL</b>	<b>1807</b>	<b>9356</b>	<b>5421</b>



A 12 yr old gets kit and fees paid for rugby Club



We connect with our friends at Mōtuti- Hokianga (Cyclone support)



The community co-designs the Angel Wings installation



Volunteers share aroha and time with mentees



Rangatahi co-design & lead a forum educating and informing Community around LGBTQIA + takatāpui realities



Jenny leads the Busy Bees Knitting group



Angel Sacks keep babies safe and warm

TABLE 9



MEMORY  
MAKING  
MOMENTS  
ANGEL  
TREATS

13 tamariki

6 adults  
2022-23

116  
(TOTAL SINCE  
2013)

**ANGEL TREATS (WITH HOSPICE)** Established in 2012, this fund allows children registered with Hospice (they or a close whanau member are terminal) to experience a special time of sharing with their whanau. They have holidays, experience touristy adventures, stay in motels and eat out. For some of the families their choice of 'treat' has been as simple as a family portrait, a trip to Spirit's Bay (where Maori lore says the souls depart from).

**Collaboration: Mid North Hospice (and from 2023 Julu- also with far North Hospice- plus Local businesses and donors are encouraged to support the experiences with discounts and opportunities**

**Going forward:** the fund has been invested by Hospice Mid North Trust and will continue to provide MMM to many tamariki over the years ahead. 2021-2022 patients arriving whilst at last stages and too ill for activities+ covid restrictions has impacted our output.

YEAR	Number of Whanau	FROM WHERE	TREATS	Number of Tamariki
2012-13	6	Kaikohe, Rahiri, Kerikeri, Okaihau	Spirits Bay, Tane Māhuta, Family Portraits, Rotorua Luge, Taipa holiday, Helicopter rides	26
2013-14	6	Waimamuku, Ngawha, Moerewa, Waipapa, Te Tii, Omanaia	Cape Reinga, Rainbows End, Pony Rides, Bouncy castle party, Paihia Hole In the Rock, Dolphins, Waiwera Hot Pools	15
2014-15	5	Waitangi, Kaikohe, Hikurangi, Kerikeri, Waikare Valley	Matakana holiday, Fishing Charter, Parasail, Auckland Holiday with Zoo, Kelly Tarlton, Waiwera Hot Pools, Russell, Dolphins, Parasailing,	9
2015-16	2	Te Haumi, Kaikohe	Paihia, dolphins, Waiwera Hot Pools,	13
2016-17	1	Kerikeri	Party with bouncy castle, puppet show	6
2017-18	2	Kaikohe, Dargaville	Auckland holiday-zoo, dinner out, Rotorua holiday	7
2018-19	3	Kerikeri, Kaikohe x 2	Tokerau Bay holiday, helicopter ride, Hole in The Rock cruise	10
2019-20	2	Mid North	Fullers Hole in Rock, Dolphin Cruise, Fuel, Tutukaka weekend and diving at Poor Knights.	6
2020-21	1	Mid North	Family were travelling. In a motorhome to Rotorua/Taupo-we paid for Huka Prawn Park, meal out, Helicopter ride	2
2021-22	4	Mid North	1 x weekend in Paihia with fishing, restaurant, accommodation ; one family photo and groceries; 1x lego set;fuel	9
2022-23	3	Mid North <i>Note: MOU with Far North signed this year and more whānau have benefitted since June 2023</i>	1x new trampoline and \$100 New World gift card, 1x night at the Sky City Hotel in Auckland, a special dinner and going up the Sky Tower, 1x family photo taken and framed	13
<b>TOTAL</b>	<b>35</b>			<b>116</b>

## PART 6: Rainbow Rangatahi & kiwiMANA Kaiārahi

TABLE 10



RAINBOW RANGATAHI

15

2022-23

PLUS

kiwiMANA Kaiārahi mentor relationships

7

2022-23

34

(TOTAL SINCE 2017)

**RAINBOW RANGATAHI:**

Weekly Club meetings: a safe space for youth to hang out, build and share friendships, engage with caring volunteers, be vulnerable and open without judgement, discover themselves, find joy, feel empowered and take responsibility, experience positive values and learn respect for self and others, express vulnerability and fears in a safe environment, teach each other, support each other, protect self and others, learn leadership skills, share new experiences, connect and belong.

Collaboration: the community at large, whānau, businesses, schools, community groups, volunteers, Rainbow Youth, Inside Out, medical practices, counsellors, adults from other communities with lived experience

Going forward we need to resource this projects. Although very rewarding, and with significant impact, this is hugely draining on our team and we need more support, volunteers, funding and staff.

<b>TOTAL youth engaged</b>	<b>15</b>
<b>AVERAGE weekly Club attendance (over the year)</b>	<b>12</b>
Presenting with clear neurodivergent behaviours or actual diagnoses	11
Presenting with clinical depression/anxiety (under professional treatment)	6
Presenting with ADD, ADHD (diagnosed)	2
Presenting with autism (diagnosed)	2
Suicidal behaviours and incidents of ideation-attempts in 12 months	3
From dysfunctional family of origin	3
<b>Improved social connection and friendships</b>	<b>12</b>
<b>Improved attendance at school</b>	<b>4</b>
<b>Improved confidence</b>	<b>12</b>
<b>Improved communication skills</b>	<b>11</b>
<b>Improved, positive Whānau experiences (reported by caregivers)</b>	<b>11</b>
<b>Improved school attendance and behaviour (reported by school)</b>	<b>3</b>



www.baldangels.org.nz



ANIWANIWA KOWHAIWHAI  
DESIGN CONCEPT BY  
RENATA & RIPEKA TANE,  
TE RUNANGA O NGĀTI REHIA

# RAINBOW RANGATAHI

FOLLOW US ON INSTAGRAM:  
@RAINBOW\_RANGATAHI



Painting our Bay of Islands towns and starting the kōrerō



Hanging out, having fun, connecting



Safe spaces for connection, support, kai, friendships



## RAINBOW RANGATAHI

### MISSION

To co-create a community of safe spaces, defined by rangatahi

### VISION

All Rainbow Rangatahi are seen, heard, and supported in Te Tai Tokerau

### PRINCIPLES

Tika, Pono, Aroha, Mana, Tapu

We do the right thing, with integrity, love, pride and respect.

The Rainbow Rangatahi Club meets weekly with transport from the local High School and delivers youth to homes after the meeting. Ages are 12yr-19yr.

Kai is provided. We observe Te Ao Maori practices with karakia, whakawhanaungatanga at every meeting. We check in with each other, share pains and gains, and respect, value and awahi each other. Games, quizzes, team building, theatre sports and simple kōrerō fills up our weekly meets. We've had some café coffee and cake meets for the over 15 yr olds so they can have time without the energy of the young ones. And have enjoyed trips out of town for beach dinners, R Tucker Thompson adventure, and neighbouring towns connections

## Where to now?

Co-creating a community that is safe and welcoming for our rangatahi - working with others to inform and strengthen safe community attitudes

### STEP 2

Plan a draft framework and date for a proposed Advisory/Working group meeting. Plan our kōrerō and style of delivery. Is it time, culture and place appropriate? What resources are required? Who is best to deliver this?

### STEP 3

identify key organisations/or people to invite to the process. Ask for a meeting at their place. Determine the appropriate approach. Have feedback options ready.

### STEP 4

Meet at their place. Find out what they know, and don't know. Share what we've learnt and need to learn. identify key allies in their place. Engage them in future planning.

### STEP 5

Invite the key allies to join an advisory group to share knowledge, identify goals and collaborate on solutions. Reflect on what is working and what's not.

### STEP 1

Continue to develop & deliver visual safe place symbols and opportunities to the community: eg:benches, library displays, rainbow safe place stickers, rainbow events

### STEP 6

advance the Community education and information kaupapa as determined by the working group making sure we rangatahi are leading and engaged to the extent they feel comfortable



RAINBOW RANGATAHI - A BALD ANGELS  
KIWIMANA PROJECT



**KiwiMANA Kaiārahi** Mentoring at risk/vulnerable rangatahi between 10-24yrs A focus on inclusivity, wellbeing, life skills, and respect. For self, each other and the community. Whānau inclusive programme -mentoring and coaching.  
**Collaboration:** Schools; Hiwa I Te Rangi Young Parents Education; Mid North Family Support; Iwi Organisations; Māori Elders; Local volunteers in Financial Literacy, Driver Licencing, Legal advocacy, Health, ANZ Bank, Theatre; Northern District Health Board; FNDC; local Businesses; local Employers; Mental Health and Addictions services

- Training for local mentors (need more mentors, more training and more Pastoral support for mentors)
- Rainbow Rangatahi programme has been developed and provides a safe space for youth every week.
- Consultations with iwi, hāpu and community have been undertaken
- Recruitment of mentees and Police checking ongoing
- Development of programmes supporting Life Skills - ongoing
- Suicidal incidents have been intervened x5 (3x in last 12 mths)
- Navigations and connections have been facilitated, enabling young parents to attend school; retain employment; obtain employment;
- Navigations have been made to support the mental health and wellbeing of rangatahi
- Vehicle repairs, licences, debt management have been supported via Angel Funds
- Emergency essentials support has been provided (kai, accommodation, furniture, fuel)
- Financial literacy, legal, budgeting mentors have delivered support and programme planning is ongoing

**Going forward -needs significant resourcing**

## Engaging, empowering, elevating our youth

The opportunity to observe, mentor and guide taitamariki/rangatahi (young people between 16-21 years) from the kiwiMANA programme since 2017 has delivered even greater insights into the challenges for our vulnerable youth and whanau. The need for **KiwiMANA Kaiārahi**, a structured mentoring program has been ascertained by the stakeholders and partners involved in kiwiMANA #1.

**Community consultation in 2019** resulted in 32 local businesses, educators and community leaders contributing insights into the feasibility of KiwiMANA Kaiārahi as a community model.

**Community business and Provider Partners** continue to build and develop solutions and support networks together.

**Recruitment and training of mentors has begun.** Development of new methods and models have been focused on partnerships and sustainability. Resources are needed.

**Continued partnership development** and co-design hui are being undertaken to develop a model that will serve our employers and taitamariki well.

**Ongoing mentoring of rangatahi**, building on skills, dreams, and rangatiratanga creates self respect, self awareness, mana and purpose.

**Reflective Practice & Evaluation** of processes and feedback inform the development of 'where to next' plans. (refer our diagram next page)

**Ongoing research** into sustainable solutions and partnership potentials will allow us to deliver best outcomes.

## PART 7: Relational & Reflective Practice

Ae, we do good mahi and we do A LOT of mahi for a very small grassroots organisation. We achieve remarkable outcomes- partly through leadership and a lot through incredible partnerships. We could not do the mahi without our amazing volunteers, sponsors, partners and funders.

We would not do the mahi at all, if we there was no need.

In a perfect world Bald Angels Charitable Trust would not exist. But this is an imperfect world and we are committed to supporting our most vulnerable tamariki to thrive.

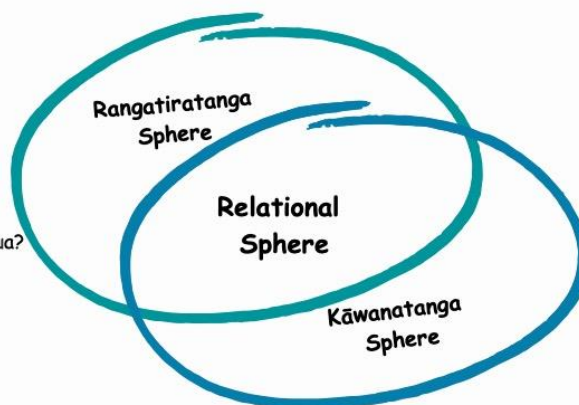
To continue doing this mahi we must reflect on our practices and our kaupapa, and not get so caught up in the business. For it is ALL about the people.

- How are we creating space for our people (youth, volunteers, kaimahi, partners, community) to be seen and heard?
- How are we understanding the power of kāwanatanga?
- How are we acknowledging and actively contributing to tangata whenua rights to tino rangatiratanga?
- How are reflecting on our practice and inviting change and improvement?
- How are we stepping back and encouraging others to lead?
- How are we leading with value?
- How are we contributing to equitable outcomes?

If we continue to ask ourselves these questions and be curious & humble enough to hear the truth, we will continue to serve our people well.

### Relational Model of Te Tiriti

- Who is involved, and how?
- What do we bring to the relationship?
- What does it mean?
- Are we ready to get out of the way?
- Are we committed to equal rights for tangata whenua?
- How do we use our privilege to bring more justice to the space?



Apply this model to practice inclusivity & equity in any group we are working with & reflect often

### REFLECTIVE PRACTICE- (PRAXIS)

**P -Position in relation to the spheres**  
**R- Relationship is everything**  
**A- Assumptions- check our bias**  
**X- Xpect to make mistakes**  
**I- invitation to go on a journey**  
**S- Start with ourselves- what is our work**

THE DESIGN SLID for Bald Angels Charitable Trust

## Part 8: Kōrero

“We have clear goals in the New Zealand Police to reduce Domestic Violence and repeat victimisation in our communities. In order to do this we actively identify and interact with families in need and provide not only crime prevention advice but where possible external agency support and assistance to help their families. We have used the gifts kindly donated by Bald Angels Charitable Trust as a way to start open and honest conversations with the families that we have and continue to identify. The food parcels and clothing are greatly appreciated and always result in a warmer welcome and response.” [An excerpt from letter: Police Northland District Prevention Manager Inspector Chris McLellan ]

She looks forward to the meetings. Her mental health has improved so much since joining you. [Parents of Rainbow Rangatahi -by text]

Thank you Bald Angels and Hospice for funding and organizing our last family holiday with our beloved [REDACTED]. It was truly fantastic, and we had so much fun and laughter. Memories of [REDACTED] smiling face and happiness during our holiday will always be treasured in our hearts forever.

Sorry, couldn't come up with a better way to describe our holiday...trying so hard to come up with the right words but tears cant stop pouring....

Cant thank you enough for everything you've done for [REDACTED] and us....our regards to everyone at Hospice

Love Always [From a Hospice whanau Memory Making Moments-or 'Angel Treats' as they call them]

What a great movie! Thank you for providing such an important and inclusive group for our young people. [REDACTED] is thriving! X [Grandparent -guardian of rainbow rangatahi]

Opportunities like this are awesome-and to see [REDACTED] actually go and do that is so unbelievable. Their confidence is growing. [Grandparent -guardian of kiwiMANA mentee talking about the R Tucker Thompson trip]

Student is living in poor housing with her Partner's whanau and their son. Having food to be able to share with the whanau has empowered her. They were very surprised and humbled by the quantity. This was the first time I had seen where the student was living and I realized there was a need to support the whanau. It felt good to help them.

[Teacher at Hiwa I Te Rangi -Okaihau Student]

*The mother was so grateful for the hamper and gifts she hugged us as she was crying. To have received something so thoughtful in a time where personal possessions and her life as she knew it was being taken away from her; the mere thought of receiving something was overwhelming.*

[NZ POLICE- Kerikeri -Newly single mum with teenagers]

*The effort that the Angels put in, was just out of this world. So much positivity and kindness shown to our team. The many laughs and korero, was like we had all known each other for ages. AMAZING!! Team of people, such a privilege to mahi alongside, Thank you xx [Te Runanga o Whaingaroa ]*

On behalf of the many Whanau in the Hokianga a massive THANK YOU to the Bald Angels. The support over the year and the Christmas parcels provided some much needed relief to our whanau. Even though the children haven't seen what they are receiving the feedback from their caregivers and parents has been heartfelt. They have expressed their gratitude and how this will alleviate some financial strain and stress they feel at this festive time of year.

We are experiencing more children that are displaced living with grandparents and extended whanau, overcrowding



That is awesome. Thank you so much for giving this opportunity to our families. [Ngati Hine Health Services]

A father cried when we delivered presents to their family. He said he was so grateful for the presents and his children would have gone without if not for these gifts.

[Women's Refuge Kaitaia]

We wish we could do something more for this whānau, however, the housing situation they are in is a reality for so many whānau in the region. We were just happy that we could provide this hamper, clothes and blankets with the Bald Angels. [Far North Reap – Kaitaia whanau in Emergency Housing for 12 months]

[Talking about tamariki 12yr boy mentored by Bald Angels Volunteer in kiwiMANA Kaiārahi program. BACT also paid for his Rugby club membership and kitted him out in gear required to play sport. From AMY: Hearts and Minds/School counsellor.]

I had a 1:1 with S [redacted] on Wednesday and he had such freshness in his face and is loving Rugby. He told me about his shopping trip with BA MENTOR to Rebel Sports. [redacted] and I rang his grandmother together to check in. She is over the moon with the Rugby and super thankful. At the moment, they are driving [redacted] to Rugby as they don't want him walking there on his own and ultimately hanging around in town.

[10 May 2023 email from Local High School Counsellor's office. Both siblings are mentored through the kiwiMANA Kaiārahi program. Father is in prison. Mother is an addict.]

Hi Therese

Thank you once again for all of the work you are doing for this little family. It is having such a wonderful impact on them all. Yes a mentor for Bella would be a great idea.

I am so impressed with the changes in Shade, he is like a different young man. Bella is doing well within the school system but having that mentor would just add another level of support for her which I think would be very helpful for her.

[Comment in Survey of the Volunteers who helped with the Christmas project 2022

selina.gordon@police.govt.nz said:]

"This is a great opportunity for the police to do something for our at risk whanau and also an excellent opportunity to interact with other support services across the north."

"I get to hang out with the family and be like a brother and do cool stuff with Trevor ." [Mentee talking about his mentor and whānau]

"It's like my happy place." [Rainbow rangatahi about Club days]

I have witnessed with my own eyes the difference whakapapa makes to our rangatahi on many occasions. EG: 2017: Our group of eight rangatahi are spinning out and tensions are high. The thought comes to me- I need to call Kipa Munro and ask for his help. He immediately offers to take them on tour of Te Ahurea and share whakapapa. Two hours later, the energy is calm and pensive. Feedback from one part Māori 19 yr old boy. Thank you. I was ashamed to be Māori, but now I get a different sense of myself.

2021: A distressed young māmā with a dysfunctional & estranged whānau settles into calm after having lunch with our kaumatua and kuia who discover a connection to her whānau-and offer her love and support.

[Founder, Angelmama, understands how connection, respect and pride is woven into whakapapa]





## Part 9: Pūtea

Our **Accountant & Treasurer is Annika Dickey**- Chartered Accountant – Director at Whitelaw Weber Chartered Accountants Ltd  
 Chartered Accountants and Business Consultants  
 10 Fairway Drive, Kerikeri New Zealand  
 Telephone NZ+64 9 4077117 ext 211  
 Website: [www.wwc.co.nz](http://www.wwc.co.nz) Email: [annika@wwc.co.nz](mailto:annika@wwc.co.nz)



### PREMIUM BUSINESS SPONSORS

Our insurance is sponsored by **GALLAGHER INSURANCE**  
 Our legal support is sponsored by **LAW NORTH**  
 Website created and sponsored by **SAJE**  
 Annual vehicle maintenance is sponsored by **AUTO ONE**  
 Logistics for the Christmas Project and so much more is sponsored by **KAINUI PACK & COOL**  
 Most of our large graphics projects are sponsored by **HALVO SIGNS**  
**CERTIFIED BUILDERS** sponsored the Angel van

And there are **many more amazing sponsors** we cannot survive without. Please check our website Sponsors page. PLUS we have a few Angels who donate regularly, making such a difference to our ability to keep doing the mahi.

*We thank you all for your support!  
 Together we can make a difference for our taitamariki....*



*Kia ora! On behalf of our people, our Partners,  
 our communities and mostly especially our  
 tamariki, nga mihi nui ki a koutou.  
 ....AngelMama Thérèse*